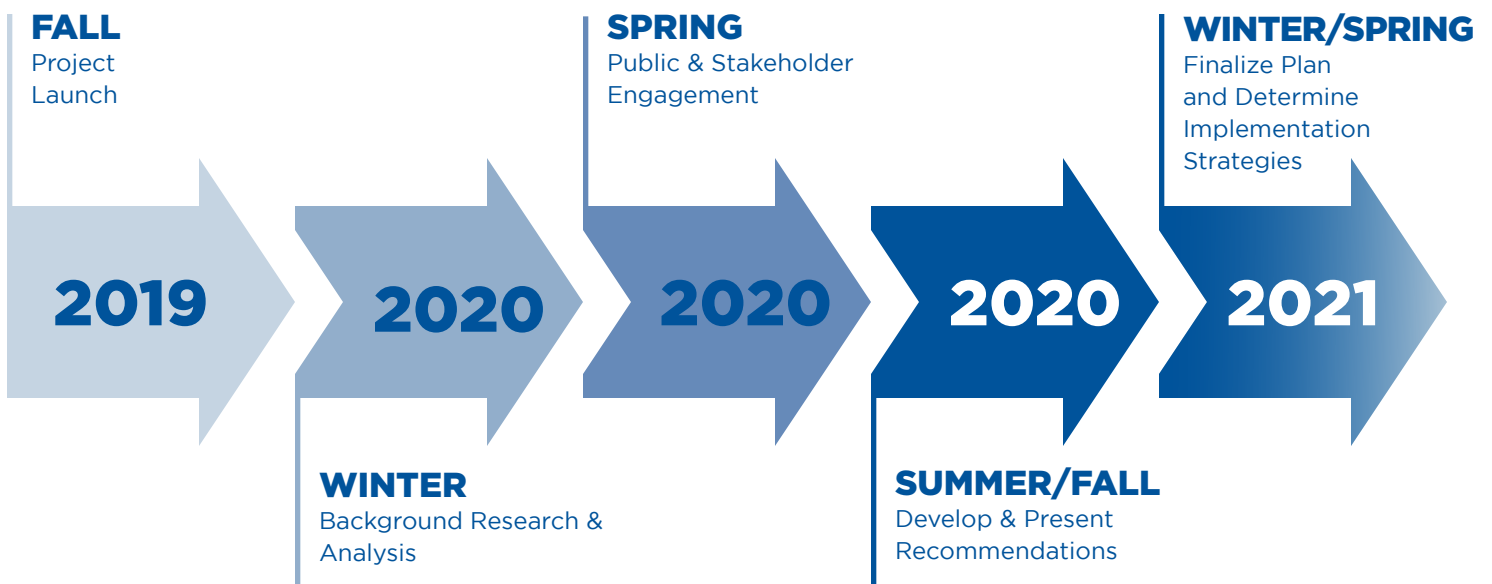


# URBAN FORESTRY MASTER PLAN PROJECT BRIEF



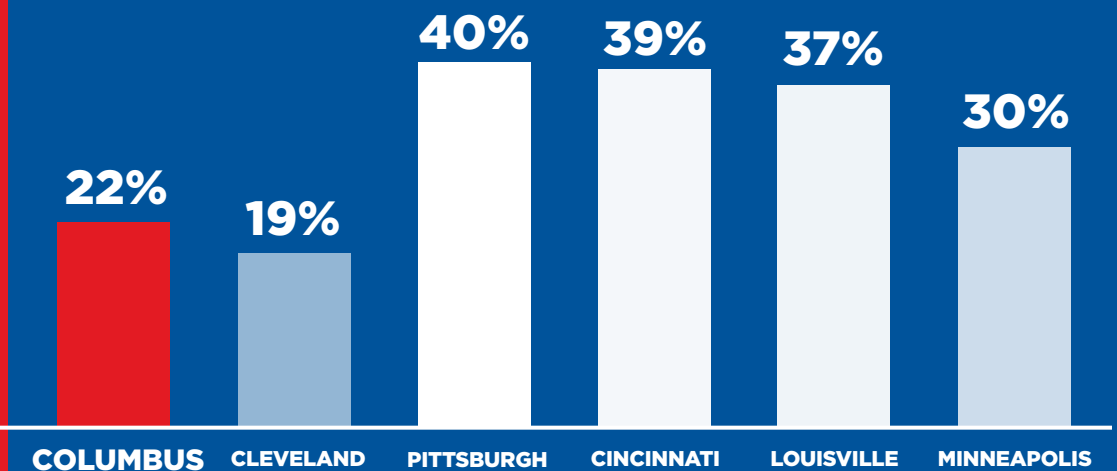
## PROJECT PROCESS



## COLUMBUS URBAN FOREST COMPARED TO PEER CITIES

### HOW DOES COLUMBUS STACK UP?

The Columbus urban forest lags behind its peer cities. This plan will develop strategies to improve its health and coverage.



TREES IN URBAN AREAS PROVIDE NUMEROUS BENEFITS INCLUDING:

60%

reduction in street-level air pollution

11%

increase in sales for shopping districts

20°

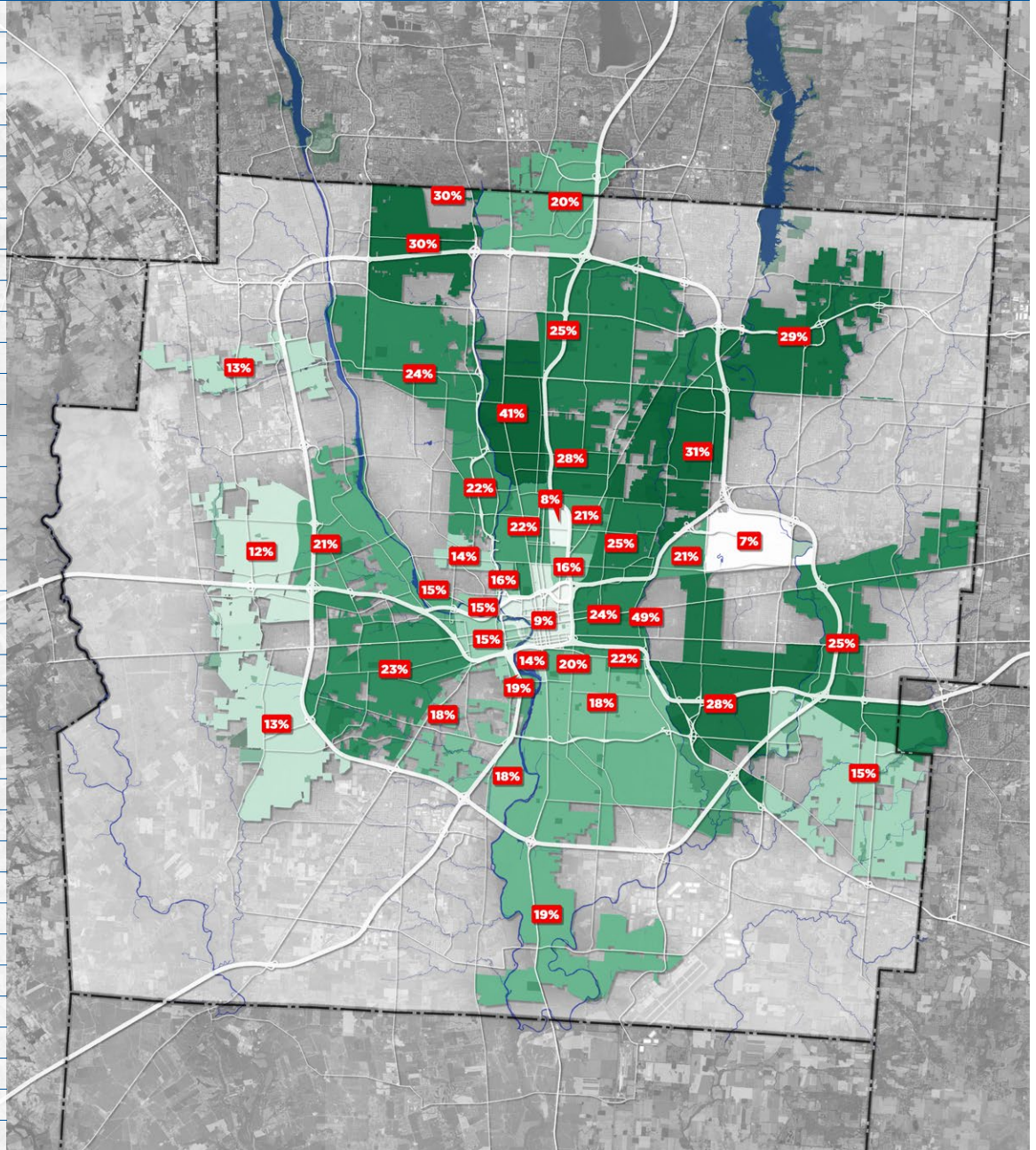
reduction in summertime ambient air temperature

12%

decrease in crime with 10% increase in tree canopy\*

\*Baltimore Police Study

WOLFE PARK	49%
CLINTONVILLE	41%
NORTHEAST	31%
FAR NORTHWEST	30%
ROCKY FORK-BLACKLICK	29%
NORTH LINDEN	28%
MID EAST	28%
NORTH CENTRAL	25%
NORTHLAND	25%
FAR EAST	25%
NORTHWEST	24%
NEAR EAST	24%
VICTORIAN VILLAGE	23%
GREATER HILLTOP	23%
LIVINGSTON AVENUE AREA	22%
OLENTANGY WEST	22%
UNIVERSITY DISTRICT	22%
EAST COLUMBUS	21%
WEST SCIOTO	21%
SOUTH LINDEN	21%
GERMAN VILLAGE	20%
FAR NORTH	20%
HARMON ROAD CORRIDOR	19%
FAR SOUTH	19%
SOUTH SIDE	18%
SOUTHWEST	18%
HARRISON WEST	16%
MILO-GROGAN	16%
FRANKLINTON	15%
SOUTH EAST	15%
DUBLIN ROAD CORRIDOR	15%
FIFTH BY NORTHWEST	14%
BREWERY DISTRICT	14%
HAYDEN RUN	13%
WESTLAND	13%
FAR WEST	12%
ITALIAN VILLAGE	11%
DOWNTOWN	9%
OHIO EXPO CENTER	8%
AIRPORT (CMH)	7%
FORT HAYES	7%



URBAN TREE CANOPY FOR COLUMBUS COMMUNITIES

LOWEST RATE OF TREE CANOPY  
 HIGHEST RATE OF TREE CANOPY

For more information, visit:  
[www.ColumbusUFMP.org](http://www.ColumbusUFMP.org)